

Jovian Interiors Velocimetry Experiment

Jason Jackiewicz and JIVE Team

Department of Astronomy
New Mexico State University

April 18 - 20, 2016
JOVIAL Kickoff Workshop

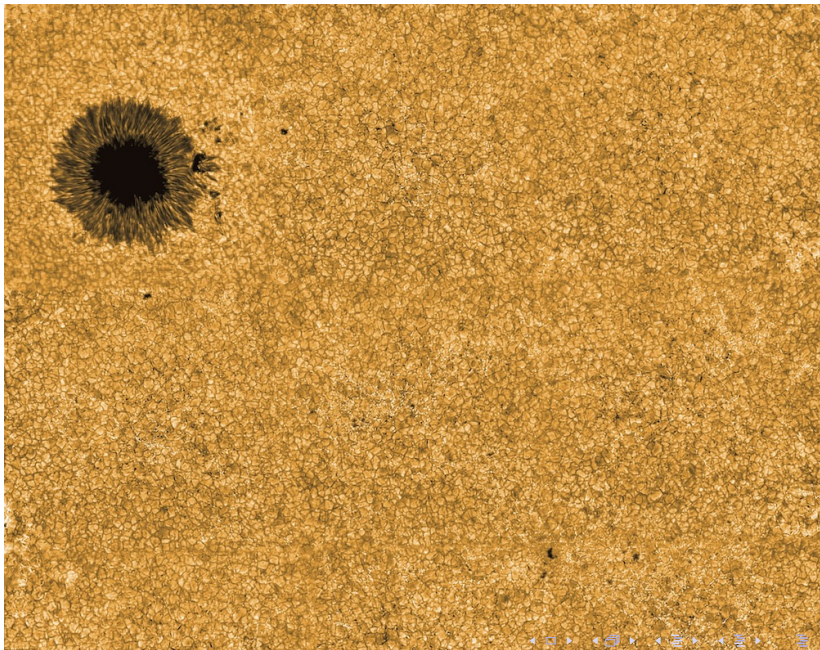


- 1 Introduction to JIVE
- 2 Inversions of Mode Frequencies
 - Setup for Saturn
 - Jupiter and Acoustic Modes
 - Local Seismology
- 3 The Dunn Solar Telescope

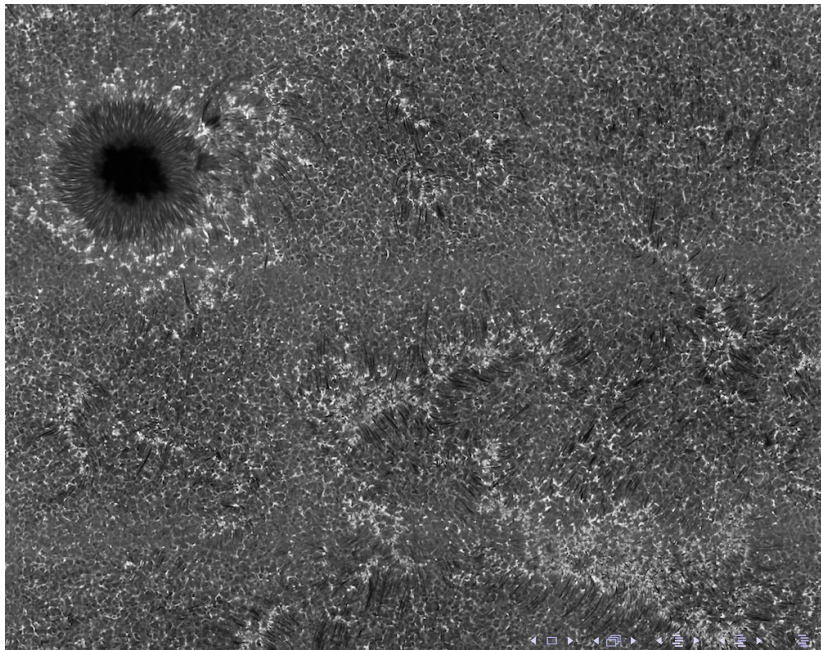
Dunn Solar Telescope



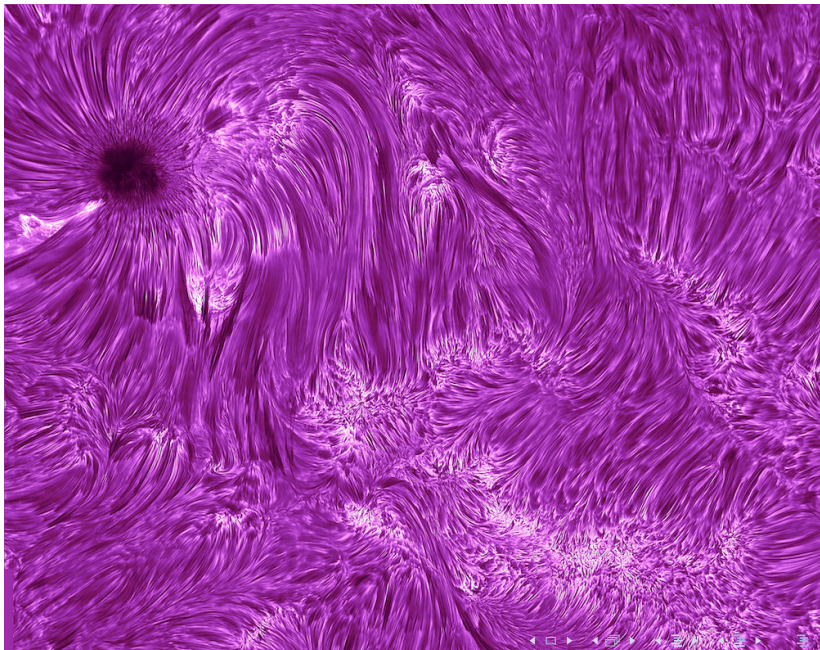
Available adaptive optics - IBIS



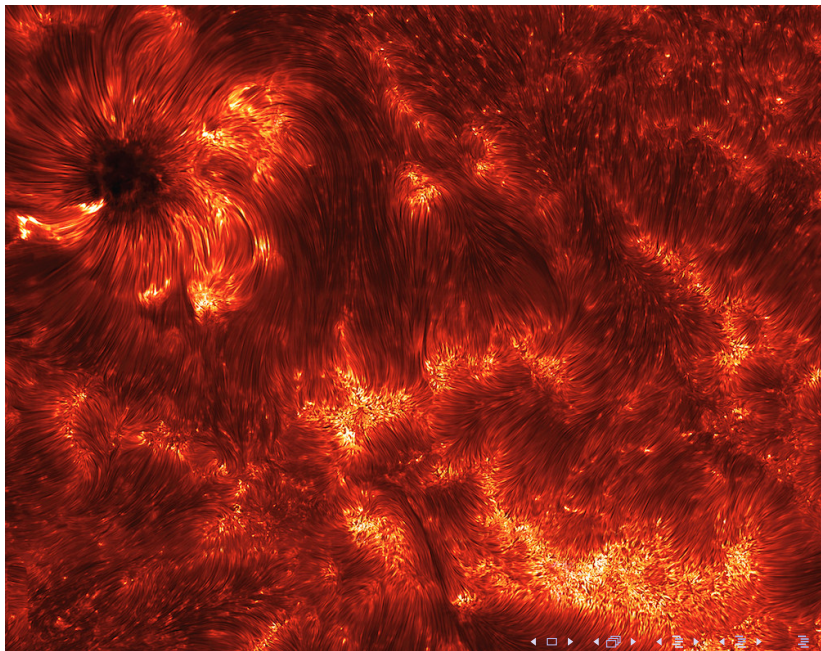
Available adaptive optics - IBIS



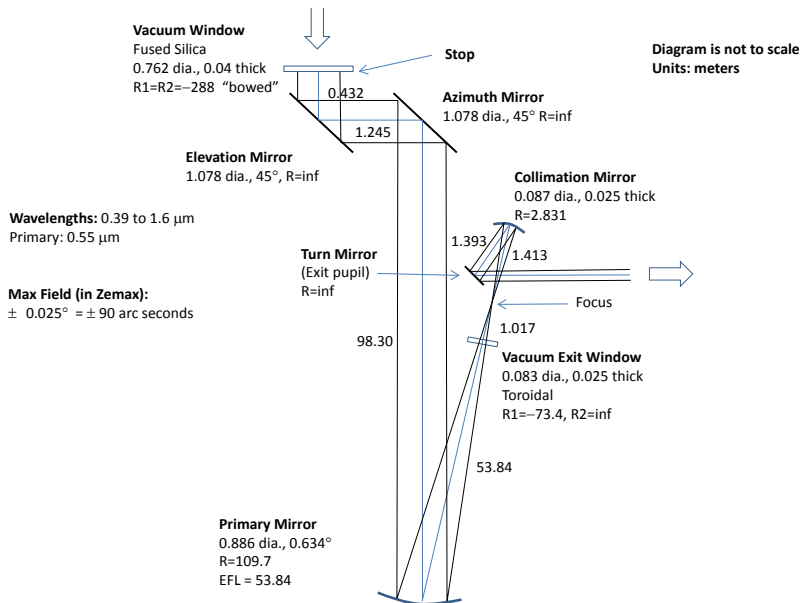
Available adaptive optics - IBIS



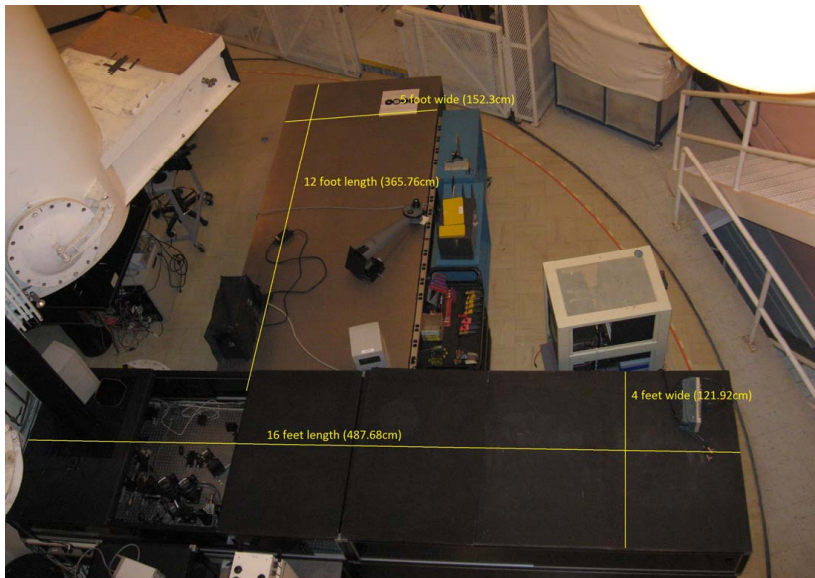
Available adaptive optics - IBIS



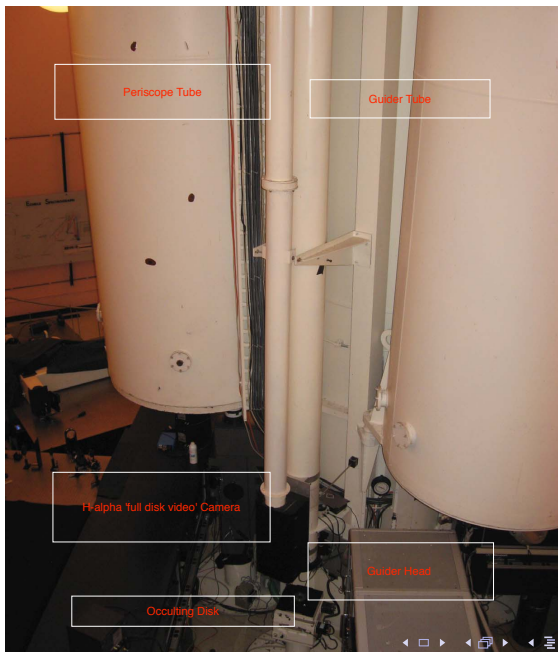
Some optical details



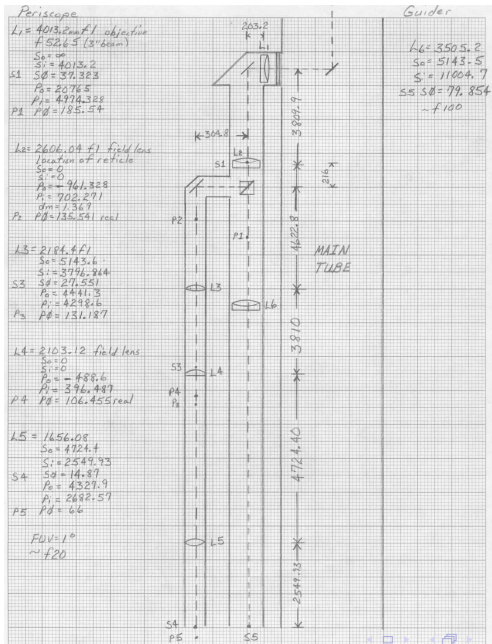
Where JIVE will sit



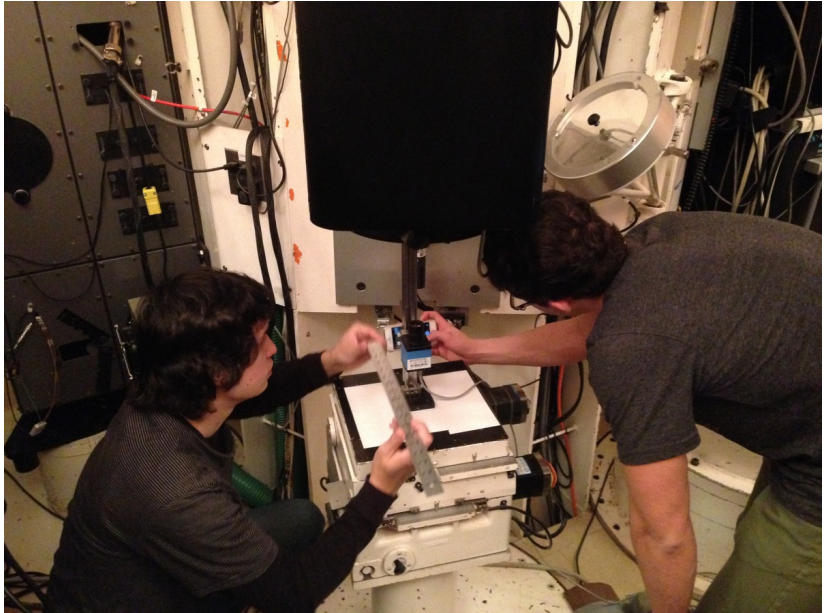
Development of guiding system



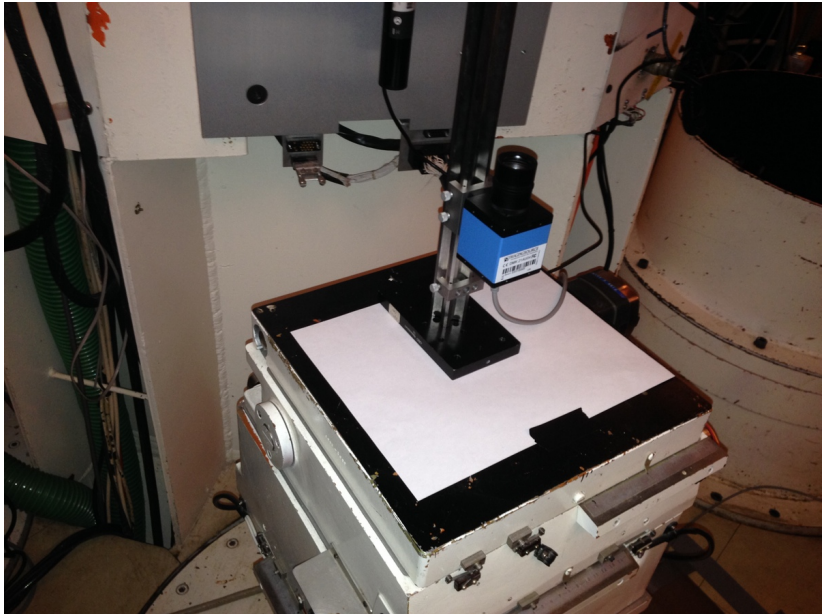
Development of guiding system



Development of guiding system



Development of guiding system



Development of guiding system



Guiding test images

jup

The future of the telescope

- The NSO plans to leave the site in autumn 2017
- NMSU is looking to build a consortium to fund operations (daytime) into the future (\sim \$1M)
- The NSF will pay 50% of the costs
- Partners are expected at the \$50 - \$100K level
- Great site for meetings, summer schools, student training, instrument development
- Wanna join?

Current prospects

- Unsuccessful state proposal this year, try again in FY 2017 (~ \$250k)
- NSF seems willing to provide bridge funds for 2-3 years to upgrade site and operate until consortium is built
- Several partners have expressed **strong** interest
- Plan B: Still the possibility of utilizing the 1-m and/or the 3.5-m at APO